



### Did you know?

Our commitment to providing clean, safe and reliable energy means routine investigations and assessments of our electric power lines.



By phone  
**1-844-765-6388**



To learn more, scan QR code or visit, [sdge.com/RIDI](https://sdge.com/RIDI).

## Risk-Informed Drone Inspections (RIDI) Program

**As part of our commitment to providing safe and reliable energy, we're proactively addressing fire risk.**



The Risk-Informed Drone Inspection (RIDI) Program is part of SDG&E's Wildfire Mitigation Plan (WMP) efforts. The RIDI Program enhances the evaluation of SDG&E's overhead electric powerlines and equipment within identified High Fire Threat District areas (see map on back).

### About RIDI Program

In support of SDG&E's Wildfire Mitigation Program, the RIDI Program will assess SDG&E® electric power lines using drone technology to identify necessary repairs or improvements and to reduce the risk of wildfire.

### What to expect

SDG&E crews and/or our approved contractors will be conducting a comprehensive assessment of overhead electric power lines on or near your property using drone technology.

To complete this assessment, SDG&E crews and/or contractors will need access to our electric powerline easements and Rights-of-way locations on or near your property.

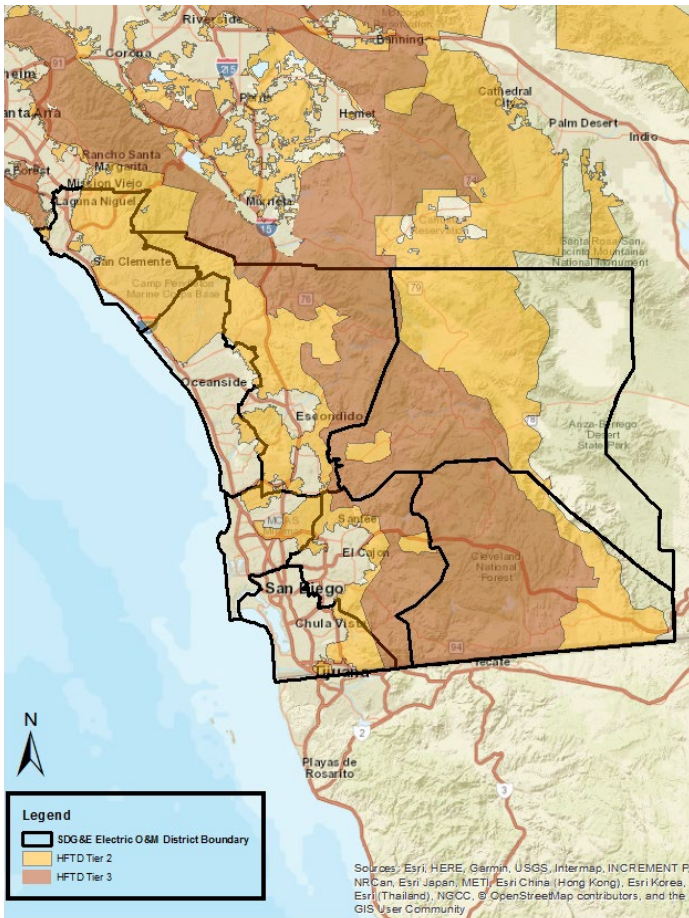
Drones will be used to collect photographs of SDG&E electric infrastructure which will be evaluated by SDG&E personnel. The objective of the program is to take photos of SDG&E's infrastructure and not the surrounding areas. Drone-related activities may temporarily increase surrounding noise levels or dust.

During drone assessments, your electric service will continue without interruption.

### Contact

For more information, please call the Project Information Hotline toll-free at **1-844-765-6388**, or visit the RIDI Program website at [sdge.com/RIDI](https://sdge.com/RIDI).

### Map of High Fire Threat Districts



### Examples of images captured for the DIAR Program

