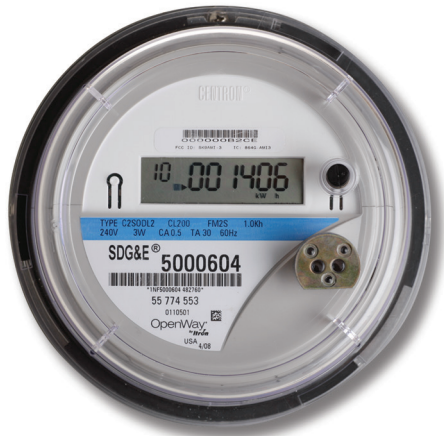


How to read your electric meter

Reading your electric meter is easy. The meter scrolls through several different displays that will show your kilowatt-hour (kWh) usage, date, time, and other system information.



Electric meter scrolling displays

Look at the top left-hand corner. Most of the scrolling digital displays are identified by a number in this corner. This number represents what type of data is being shown:

01 03.04.13

- "01" = Date. Shown as month/date/year. For example, March 4, 2013 would display as 03.04.13.

02 19:17:17

- "02" = Time. Shown in "military" or 24-hour time and includes seconds. For example, if it's 7:17 pm and 17 seconds, the display will be 19:17:17.

10 001406 kWh

- "10" = Current meter read.

There's other information that scrolls through the display sequence providing valuable system information to SDG&E®.

How to read your gas meter

Reading your gas meter is as easy as reading the dials on a clock.

Gas meter dials

Your gas meter records and sends gas usage data through a smart “module” located behind the dials. The smart module moves the dials as gas is used.

- You can read from left-to-right or right-to-left.
- When the dial points between two numbers, write down the lower of the two numbers.
- When a dial hand appears to be exactly on a number (see dial “D” in each example) look at the dial directly to the right. If the hand on the dial to the right has not passed “0”, write down the lower number. For example, since the hand on dial “C” has not passed “0”, dial “D” is “2”.

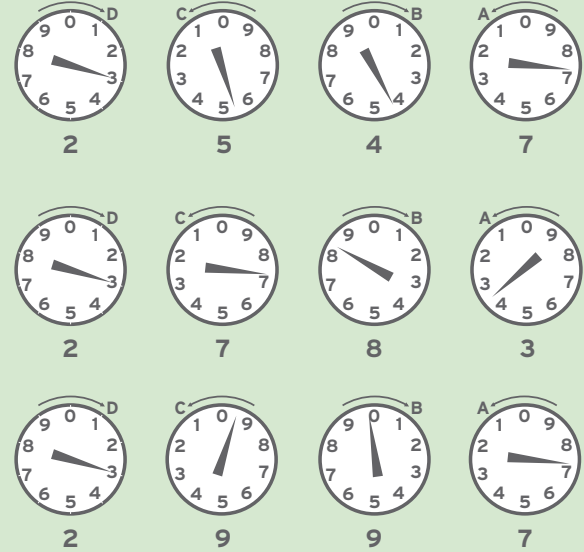
Notice that the hand on the first and third dials runs clockwise, while on the second and fourth dials the hand runs counterclockwise. For an accurate read, you must remember to read each dial based on the direction the hand moves on that dial.

Save energy and money

The energy use information collected by your gas and electric meters will help you understand your energy habits and the best ways to save. You can view your energy use through the Internet with My Account, our online account management service. To sign up, visit sdge.com/myaccount and have your SDG&E bill handy.

For more information about how to read your gas and electric meters, visit sdge.com or call 1-800-411-7343.

Si desea recibir una copia de esta información en español, sírvase llamar a SDG&E al 1-800-311-7343.



Using our example, the initial meter reading is 2547. To find out how much energy you use in a given time, subtract your first reading from a second reading taken at a later date. The customer in our example used 236 between the first two meter-read dates (2783 - 2547 cubic feet of gas) and 214 cubic feet between the next two reads (2997 - 2783).

Note: Gas meters measure in cubic feet. To get your total gas usage in therms, after subtracting the first reading from the second, multiply the total by the “therm multiplier” for that month. The therm multiplier is found on the second page of your bill.