

Dashboard: Advanced Map Interactions

Covered Functionality

<i>Understanding the Widget Box</i>	2
<i>Map Layers</i>	3
<i>Search Affected Areas</i>	5
<i>Circuit List</i>	6

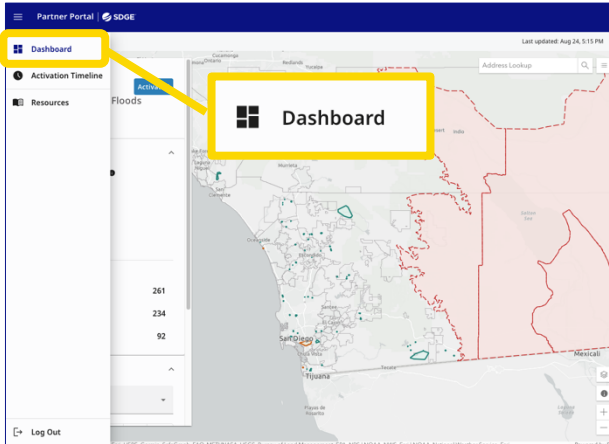
Understanding the Widget Box

How to understand information in the widget box.

ACTION SCREENSHOT

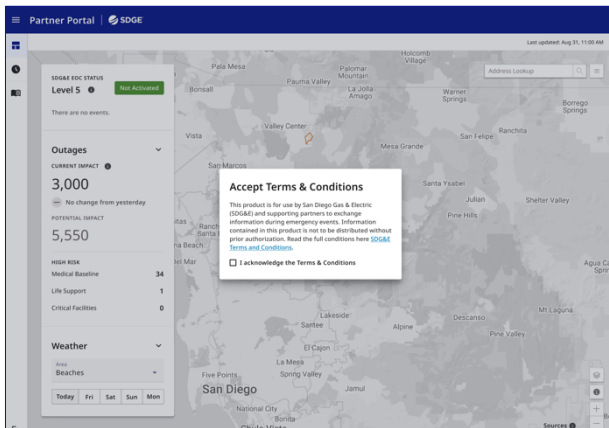
ASSOCIATED STEPS

View



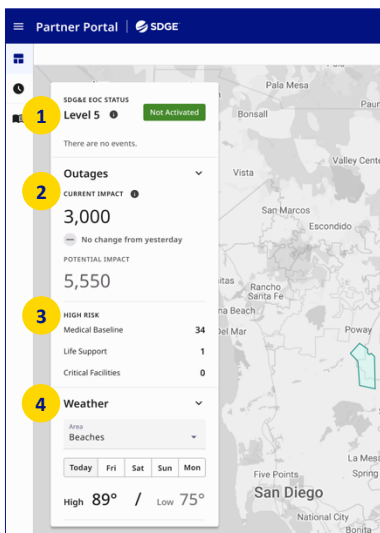
From the homepage, navigate to the **Partner Dashboard** page by opening the navigation drawer on the left side of the screen and clicking the **Dashboard** icon.

View



Before viewing the **Partner Dashboard**, a legal **Terms & Conditions** window will pop-up. Check the "I acknowledge the Terms & Conditions" box to continue.

View



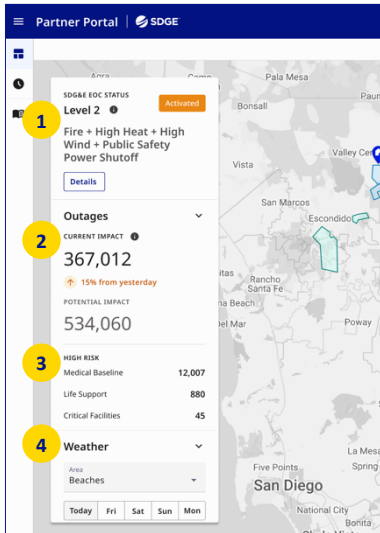
The **Partner Dashboard** shows an interactive map with a widget box to the left. This box depicts:

- 1 SDG&E EOC Status
- 2 Outages
- 3 Medical Baseline / Life Support customers and Critical Facilities at risk
- 4 Weather Forecast

In this example, the SDG&E EOC Status is **Level 5, not activated**.

ACTION SCREENSHOT

View



ASSOCIATED STEPS

The widget box will update as conditions change and if the SDG&E EOC activates. For example, here:

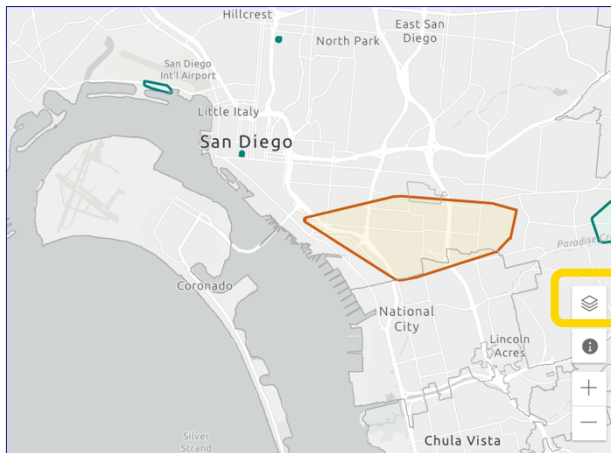
- 1 The SDG&E EOC status changed to Activated at Level 2
- 2 The **Outages** section shows the total number of SDG&E customers experiencing an outage, as well as the change from the day before
- 3 The High-Risk section updated as the number of Medical Baseline / Life Support customers and Critical Facilities at risk increased
- 4 The weather forecast section can be changed to report on a different area by using the drop-down menu and a different time by selecting a future day

Map Layers

How to view different datasets on the interactive map.

ACTION SCREENSHOT

View

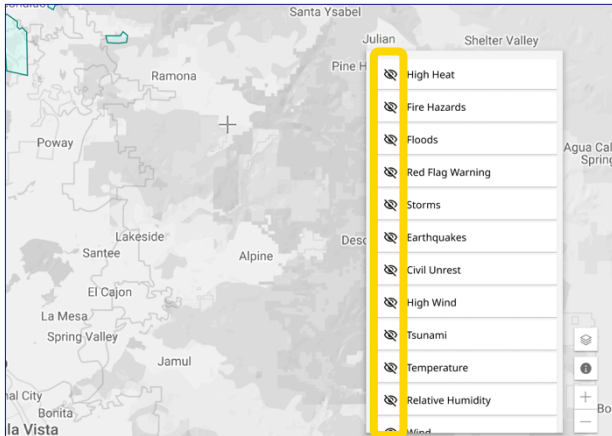


ASSOCIATED STEPS

On the bottom right corner of the map, there is an icon that shows **Map Layers**.

ACTION SCREENSHOT



View



ASSOCIATED STEPS

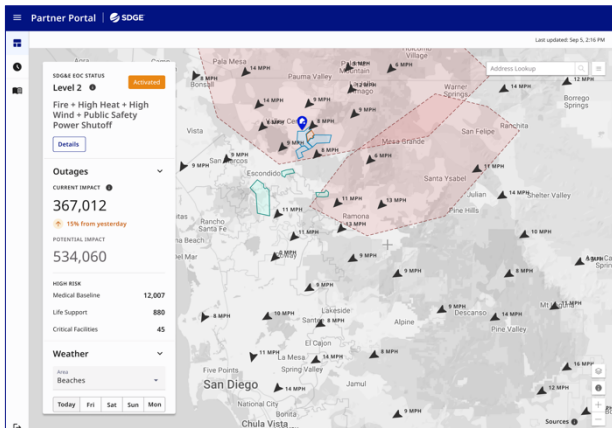
Clicking on the **Map Layer** icon brings up a list of over 15 different data layers that can be displayed on the map.

The **Eye Icon** indicates if the data layer is currently visible.

-  Data layer is visible on the map
-  Layer is hidden from the map

Click on the Eye Icon to show or hide a data layer.

View



Here is an example of the map with the **Wind Speed** layer visible.

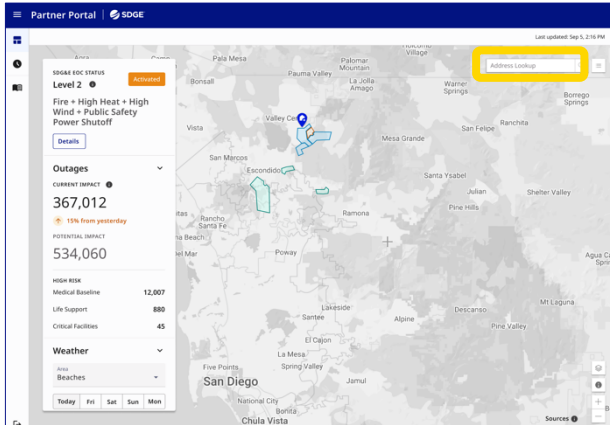
Click the Map Data icon again to close the list of available map data layers.

Search Affected Areas

How to search for locations within the map.

ACTION SCREENSHOT

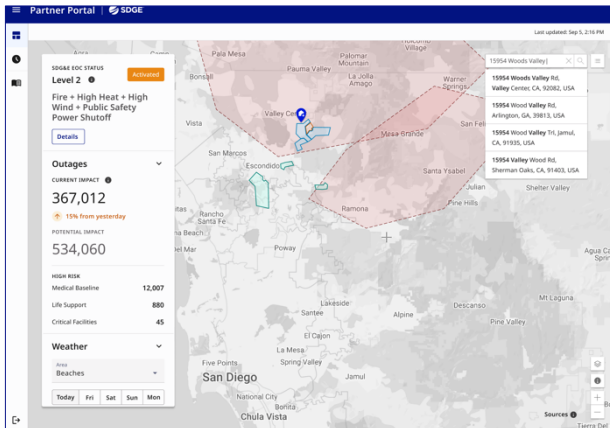
Search



ASSOCIATED STEPS

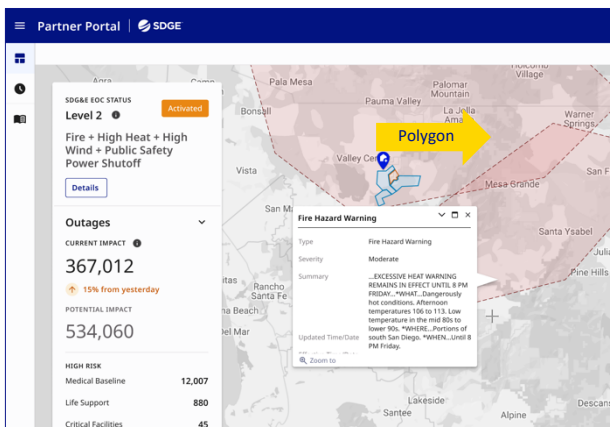
Click the **Address Lookup** search bar in the top right of the map to search specific locations within the map.

Search



Begin typing in the **Search Bar**, Portal will start suggesting locations. Either finish typing a complete address and hit enter, or select from the drop-down list of suggestions

View



The map zooms to the search result. Click on any of the map features around the address to learn more about what's happening in the area. In the example here, the red polygons indicate Fire Hazard due to excessive heat.

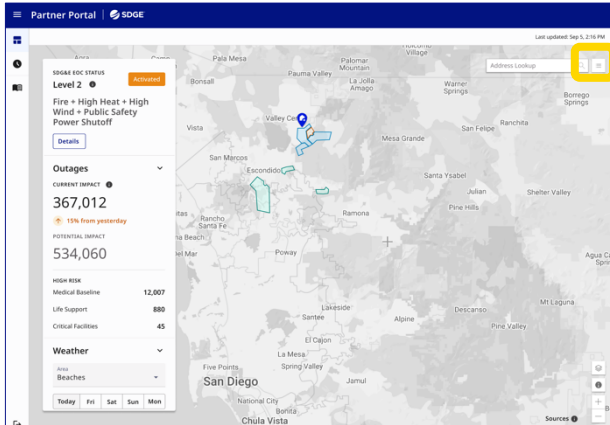
Click on a red polygon to open an **Information Pop-Up** that provides more detail.

Circuit List

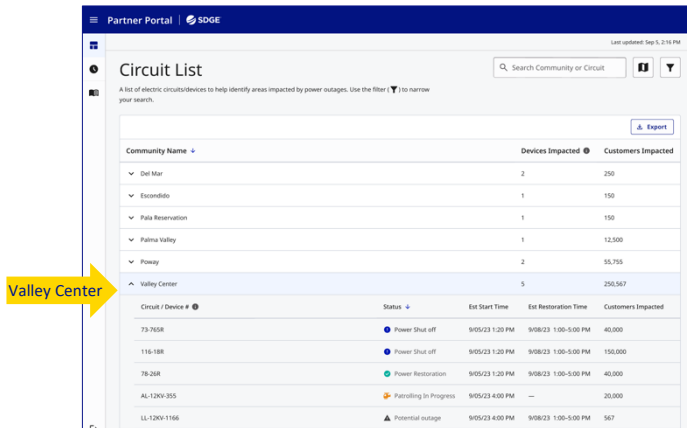
How to view, filter, and export the circuit list.

ACTION SCREENSHOT

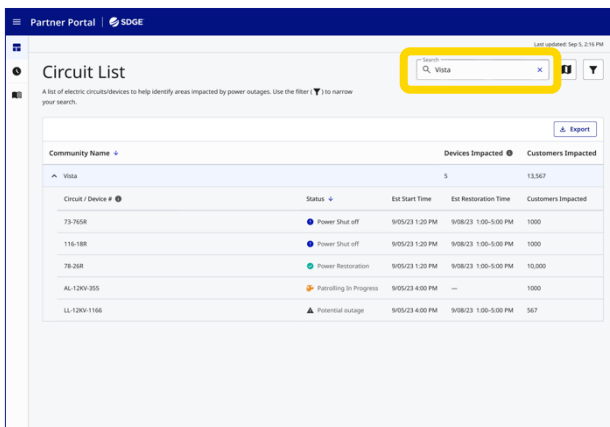
View



View



Search



ASSOCIATED STEPS

To view the **Circuit List**, click the **hamburger icon** to the right of the search bar.

The **Circuit List** page shows a list of electric circuits/devices that are currently experiencing an outage or may be impacted by a potential outage.

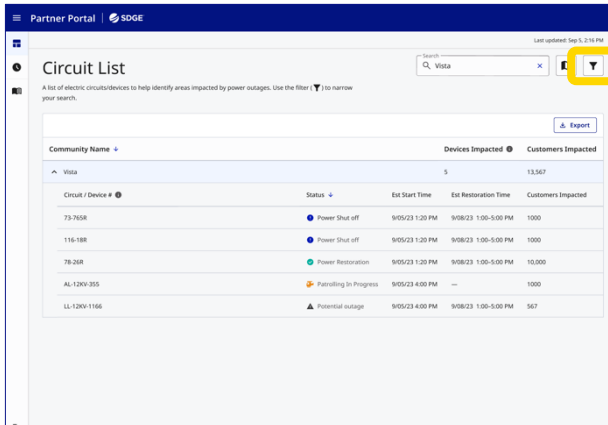
Click on a Community Name to show more information, such as the **circuit/device number**, its **status**, the **estimated start time** of the outage, the **estimated restoration time**, and the number of **customers impacted**.

To search for a specific community, type the community name into the **Search Bar** on the top right of the screen.

ACTION SCREENSHOT

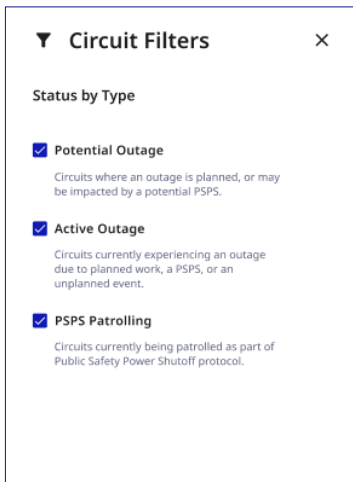
ASSOCIATED STEPS

Filter



The circuit list can be filtered using the **Filter Icon** to the right of the **Search Bar**.

Filter

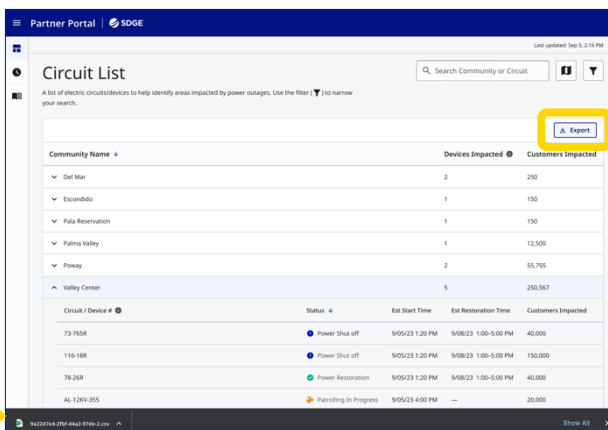


The circuit list can be filtered by **Potential Outage**, **Active Outage**, or **PSPS Patrolling**.

Check the box next to the desired filter.

Click **Apply** at the bottom.

Export



To export the Circuit List, click the **Export** button on the top right of the list table.

The list exports to your browser's downloads folder as a CSV.



ACTION SCREENSHOT

Export

Community	Device ID	Start Time	Restoration Time	Status	Affected Customers	Last Updated
Valley Center	42 AC3R ABC 170966.0	2023-23701-30:00-07:00	2023-08-23757-30:00-07:00	02_POTENTIALLY_AFFECTED	1	55610-04-07T13:40:00-07:00
Valley Center	1020-152	2023-23701-30:00-07:00	2023-08-23757-30:00-07:00	02_POTENTIALLY_AFFECTED	2	55610-04-07T13:40:00-07:00
Valley Center	214-538	2023-24701-30:00-07:00	2023-08-24709-00:00-07:00	02_POTENTIALLY_AFFECTED	347	55610-04-07T13:40:00-07:00
Valley Center	351-104	2023-24701-30:00-07:00	2023-08-24708-30:00-07:00	02_POTENTIALLY_AFFECTED	1	55610-04-07T13:40:00-07:00
Valley Center	351-130	2023-23701-30:00-07:00	2023-08-23758-30:00-07:00	02_POTENTIALLY_AFFECTED	1	55610-04-07T13:40:00-07:00
Valley Center	351-243	2023-24701-00:00-07:00	2023-08-24709-00:00-07:00	02_POTENTIALLY_AFFECTED	1	55610-04-07T13:40:00-07:00
Valley Center	351-38	2023-24701-30:00-07:00	2023-08-24709-00:00-07:00	02_POTENTIALLY_AFFECTED	4	55610-04-07T13:40:00-07:00
Valley Center	351-140	2023-23701-30:00-07:00	2023-08-23758-30:00-07:00	02_POTENTIALLY_AFFECTED	1	55610-04-07T13:40:00-07:00
Valley Center	353-308	2023-24701-30:00-07:00	2023-08-24709-00:00-07:00	02_POTENTIALLY_AFFECTED	8	55610-04-07T13:40:00-07:00
Valley Center	367-349	2023-23701-30:00-07:00	2023-08-23759-30:00-07:00	02_POTENTIALLY_AFFECTED	1	55610-04-07T13:40:00-07:00
Valley Center	367-358	2023-24701-00:00-07:00	2023-08-24709-00:00-07:00	02_POTENTIALLY_AFFECTED	2	55610-04-07T13:40:00-07:00
Valley Center	F246965	2023-23701-30:00-07:00	2023-08-23759-00:00-07:00	02_POTENTIALLY_AFFECTED	7	55610-04-07T13:40:00-07:00
Valley Center	F548327	2023-23701-00:00-07:00	2023-08-23758-30:00-07:00	02_POTENTIALLY_AFFECTED	5	55610-04-07T13:40:00-07:00
Ladlers Ranch	1242-6	2023-24715-00:00-07:00	2023-08-24723-00:00-07:00	02_POTENTIALLY_AFFECTED	187	55610-04-07T13:40:00-07:00
Ladlers Ranch	1242-8	2023-27115-00:00-07:00	2023-08-27223-00:00-07:00	02_POTENTIALLY_AFFECTED	321	55610-04-07T13:40:00-07:00
Mira Mesa	426-889	2023-24701-00:00-07:00	2023-08-24704-00:00-07:00	02_POTENTIALLY_AFFECTED	261	55610-04-07T13:40:00-07:00
Mira Mesa	426-433	2023-24702-30:00-07:00	2023-08-24709-00:00-07:00	02_POTENTIALLY_AFFECTED	27	55610-04-07T13:40:00-07:00
Mira Mesa	728-124	2023-24704-00:00-07:00	2023-08-24707-00:00-07:00	02_POTENTIALLY_AFFECTED	4	55610-04-07T13:40:00-07:00
Golden Hills	LBE 194890	2023-22708-06:00-07:00	2023-12-31116-00:00-08:00	03_AFFECTED	1	55610-04-07T13:40:00-07:00
Rancho San Diego	LBE 151757	2023-23701-30:00-07:00	2023-08-23753-00:00-07:00	02_POTENTIALLY_AFFECTED	73	55610-04-07T13:40:00-07:00
Midway	124-10	2023-24714-00:00-07:00	2023-08-24723-00:00-07:00	02_POTENTIALLY_AFFECTED	12	55610-04-07T13:40:00-07:00
Highland Valley	MO91-79	2023-24701-00:00-07:00	2023-08-24704-00:00-07:00	02_POTENTIALLY_AFFECTED	3	55610-04-07T13:40:00-07:00
Glen Oaks	356-8	2023-24701-30:00-07:00	2023-08-24708-00:00-07:00	02_POTENTIALLY_AFFECTED	12	55610-04-07T13:40:00-07:00
Glen Oaks	357-248	2023-23701-30:00-07:00	2023-08-23758-30:00-07:00	02_POTENTIALLY_AFFECTED	29	55610-04-07T13:40:00-07:00
Escondido	F915870	2023-23701-30:00-07:00	2023-08-23757-30:00-07:00	02_POTENTIALLY_AFFECTED	7	55610-04-07T13:40:00-07:00
Fallbrook	42 AC3R ABC 254148.0	2023-23718-30:00-07:00	2023-08-23753-00:00-07:00	02_POTENTIALLY_AFFECTED	21	55610-04-07T13:40:00-07:00
Fallbrook	46 R.57FD BC 203298.0	2023-24702-00:00-07:00	2023-08-24707-00:00-07:00	02_POTENTIALLY_AFFECTED	5	55610-04-07T13:40:00-07:00
Fallbrook	F668725	2023-23701-00:00-07:00	2023-08-23758-30:00-07:00	02_POTENTIALLY_AFFECTED	2	55610-04-07T13:40:00-07:00
Fallbrook	F82-107	2023-23705-00:00-07:00	2023-08-23758-30:00-07:00	02_POTENTIALLY_AFFECTED	5	55610-04-07T13:40:00-07:00
NE Escondido	LBE 203930	2023-22707-00:00-07:00	2023-08-22711-00:00-07:00	03_AFFECTED	1	55610-04-07T13:40:00-07:00

ASSOCIATED STEPS

The CSV contains a spreadsheet of:

- 1 Locations
- 2 Corresponding circuits/sectionalizing devices
- 3 The start time of their outage or potential outage
- 4 The restoration time of their outage or potential outage
- 5 Circuit status
- 6 Affected customers